

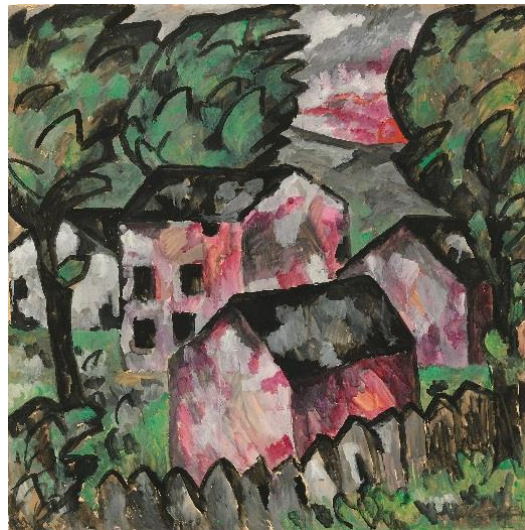
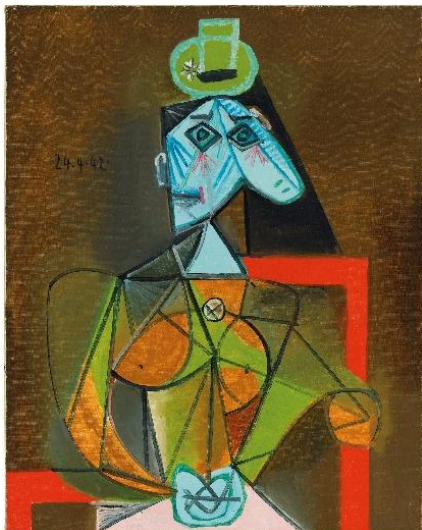
CHRISTIE'S

PRESS RELEASE | LONDON
FOR IMMEDIATE RELEASE: 4 JUNE 2018

CHRISTIE'S *IMPRESSIONIST AND MODERN ART* EVENING SALE

[FULL CATALOGUE NOW ONLINE](#)

20 JUNE 2018



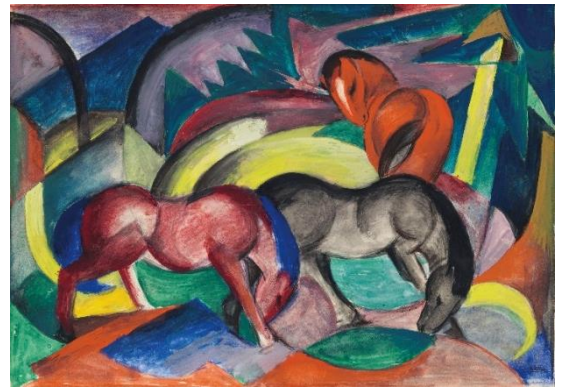
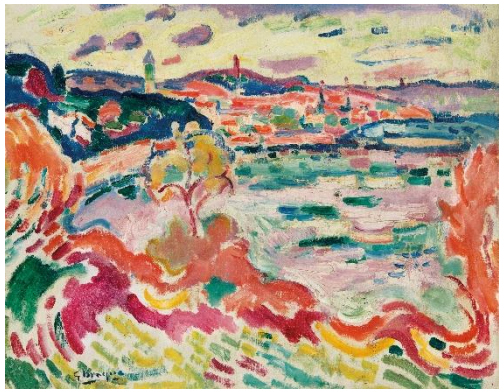
London – Christie's [Impressionist and Modern Art Evening Sale](#) will take place on 20 June, part of [20th Century at Christie's](#), a series of auctions that take place from 15 to 29 June 2018. A group of masterpieces from the late 19th and 20th century will lead the auction, including *La Gare Saint-Lazare, vue extérieure* by Claude Monet (1877, estimate on request, *illustrated above, top centre*), *Femme dans un fauteuil* by Pablo Picasso (1942, estimate on request, *illustrated above, left*) and *Landscape* by Kazimir Malevich (1911, estimate: £7,000,000-10,000,000, *illustrated above, right*). Further highlights include a rare Fauvist landscape by Georges Braque; a vibrant gouache depiction of horses by Franz Marc; a rare and early lifetime cast by

Auguste Rodin; Paul Cézanne's fantasy view of modern life; and one of the earliest representations of René Magritte's recognisable motif, the leaf-bird. Leading female Impressionists will also be represented with four sculptures from Camille Claudel and works by Eva Gonzalès and Berthe Morisot. Property from the Personal Collection of Max G. Bollag, the influential Swiss dealer, will also be offered, including paintings by Pablo Picasso and Jean-Baptiste-Camille Corot. The [Impressionist and Modern Art Day and Works on Paper](#) sales will follow the Evening Sale on 21 June. A focused online-only auction, *Picasso Ceramics*, will open for bidding alongside the live auctions from 15 to 22 June 2018. All works will be on view at Christie's King Street from 15 to 20 June 2018.

KAZIMIR MALEVICH, CLAUDE MONET AND PABLO PICASSO

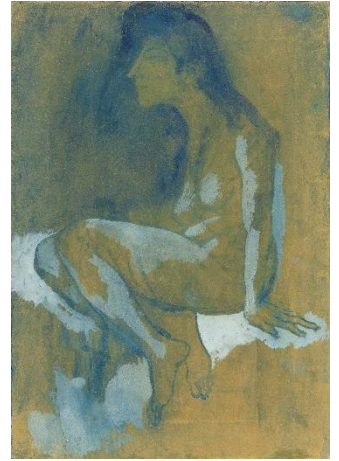
Claude Monet's [La Gare Saint-Lazare, vue extérieure](#) will be offered from 'The Collection of Nancy Lee and Perry R. Bass'. It is from Monet's celebrated 'Gare Saint-Lazare' series of 12 canvases depicting the modernised railway station. Kazimir Malevich's [Landscape](#) is from 'The Red Series', a group of works characterised by gestural brush strokes and an expressive use of colour, referencing both Fauvism and Cubism, and anticipating Malevich's move towards Suprematism. One of a major series of full-scale portraits painted during the Second World War, and rarely exhibited, [Femme dans un fauteuil](#) by Pablo Picasso depicts Picasso's great muse of the period Dora Maar, the surrealist photographer and painter.

GEORGES BRAQUE, FRANZ MARC AND AUGUSTE RODIN



Drei Pferde by Franz Marc (1912, estimate: £2,500,000-3,500,000, *illustrated above, right*) is a pioneering painting of horses made in the final years before the First World War in which Marc moved increasingly towards complete abstraction. An exceptionally early and dedicated cast of *Baiser, moyen modèle dit "Taille de la Porte" - modèle avec base simplifiée* by Auguste Rodin (cast in 1890, estimate: £5,000,000-7,000,000, *illustrated above, centre*) is one of his greatest and best-known works. Emblematic of the heady emotion, eroticism and vitality that define Rodin's radical *oeuvre*, as well as his distinctive, highly expressive form of modelling, the work has become an icon of modern sculpture. Georges Braque's *L'Estaque* (*circa* 1906, estimate: £4,500,000-6,500,000, *illustrated above, left*) is one of the first Avant-garde works he created, marking his move towards Cubism.

PROPERTY FROM THE PERSONAL COLLECTION OF MAX G. BOLLAG



Driven by an abiding passion for modern art, the influential Swiss dealer Max G. Bollag acquired an eclectic, diverse collection of artworks dating from the late 19th and early 20th centuries during the course of his sixty-year career. Renowned for his expert eye, profound knowledge and innate personal charm and insight, he was a key figure in the art world. Works from his collection include Pablo Picasso's *Tête de femme* (1906, estimate: £2,000,000-3,000,000, *illustrated above, left*), Jean-Baptiste-Camille Corot, *Jeune femme étendue sur l'herbe* (circa 1850-60, estimate: £250,000-350,000, *illustrated above, centre*); and Pablo Picasso's *Femme accroupie* (1903, estimate: £700,000-1,000,000, *illustrated above, right*)

SCULPTURES BY CAMILLE CLAUDEL



Camille Claudel's artistic talents were recognised at the tender age of 12 by the sculptor Alfred Boucher. In 1882 Auguste Rodin, taking on the role of teacher, and Camille Claudel became significantly involved in each other's lives, with Claudel becoming pupil, collaborator, muse, model and lover at various points in the 15 years they spent together. Claudel quickly became Rodin's most trusted assistant, learning to work in bronze, plaster, marble and onyx. She also became one of the few assistants allowed to work on Rodin's marble pieces. Four sculptures by Claudel are offered for sale: *La joueuse de flûte* (circa 1903, estimate: £300,000-500,000, *illustrated above, centre left*); *La valse* (circa 1895, estimate: £700,000-900,000, *illustrated above, left*); *L'abandon, grand modèle* (1905, estimate: £700,000-900,000, *illustrated above, centre right*); and *La fortune* (circa 1900, estimate: £350,000-550,000, *illustrated above, right*).

PAUL CÉZANNE AND RENÉ MAGRITTE



Left: Paul Cézanne, *La conversation*, 1870-71, estimate: £1,000,000-1,500,000
Right: René Magritte, *Les compagnons de la peur*, 1942, estimate: £3,500,000-5,500,000

PRESS CONTACT: Sara Macdonald | +44 207 752 3136 | saramacdonald@christies.com
Emily Burke | +44 207 389 2054 | eburke@christies.com

About Christie's

Christie's, the world's leading art business, had global auction, private and digital sales in 2017 that totalled £5.1 billion / \$6.6 billion. Christie's is a name and place that speaks of extraordinary art, unparalleled service and international expertise. Christie's offers around 350 auctions annually in over 80 categories, including all areas of fine and decorative arts, jewellery, photographs, collectibles, wine, and more. Prices range from \$200 to over \$100 million. Christie's also has a long and successful history conducting private sales for its clients in all categories, with emphasis on Post-War & Contemporary, Impressionist & Modern, Old Masters and Jewellery.

Alongside regular sales online, Christie's has a global presence in 46 countries, with 10 salerooms around the world including in London, New York, Paris, Geneva, Milan, Amsterdam, Dubai, Zürich, Hong Kong, and Shanghai.

**Please note when quoting estimates above that other fees will apply in addition to the hammer price - see Section D of the Conditions of Sale at the back of the sale catalogue.*

**Estimates do not include buyer's premium. Sales totals are hammer price plus buyer's premium and are reported net of applicable fees.*

Images available on request

FOLLOW CHRISTIE'S ON:

